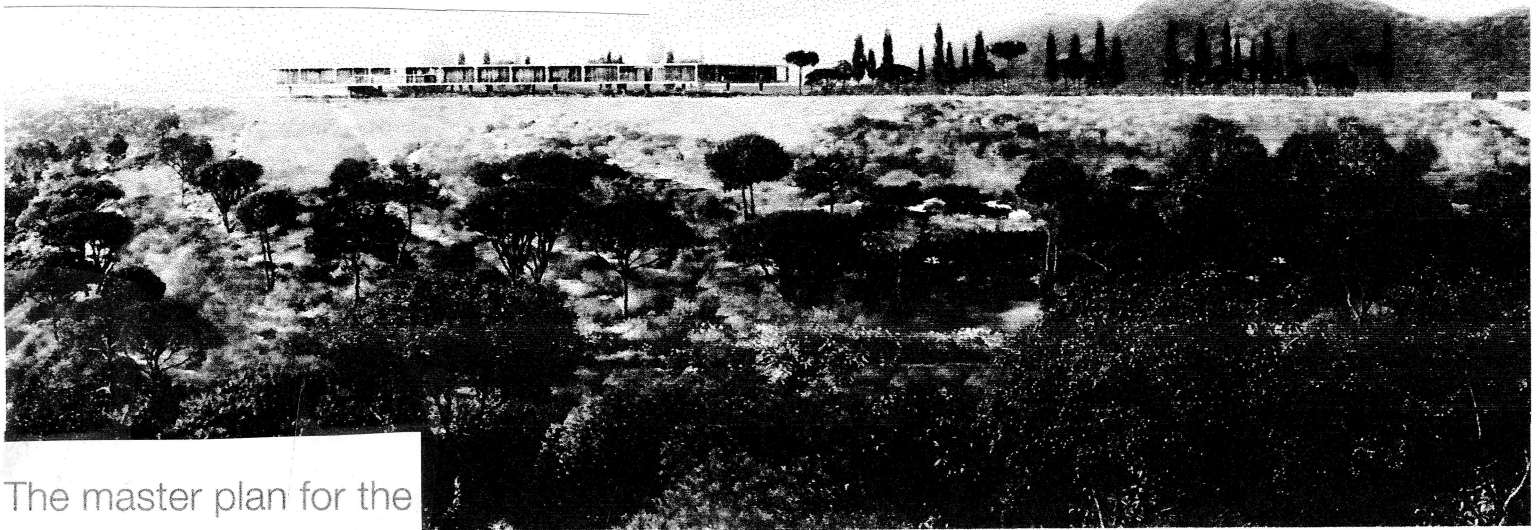


"By building our campus here on the Pacific coast, we hope to advance the position of Los Angeles as a world center for ideas, linking the East to the West." *Nicolas Berggruen*

B Berggruen[®] Institute



The master plan for the Scholars Campus is a landscape restoration vision as much as an architectural project.

The Berggruen Institute, a non-profit, non-partisan research organization, is designing a Scholars Campus, just north of the Getty Center. The Institute's intention is to create a peaceful environment where distinguished scholars and thought leaders convene to develop new ideas for a changing world, and to propose practical solutions

- Public hiking trails
- Gardens, courtyards and recreational space

The location offers a wonderful cultural and academic corridor with world class institutions, including The Getty, UCLA, Skirball Center, Mount St. Mary's University and American Jewish University.

The primary entrance to the Scholars Campus will be off Sepulveda Blvd. That road will also serve as the primary emergency access route.

that can transform society—and humanity—for the better.

The Scholars Campus is located in an urban nature corridor an ideal location to develop new ideas for a changing world. The plan includes:

- Areas for group and individual study
- Cottages for visiting scholars
- Administrative offices
- A 250-seat lecture hall
- A chairman's residence